

BEECH OVENS

WORLD LEADER IN SPECTACULAR COOKING EQUIPMENT



36 Gladys Street, Stones Corner,
Queensland, Australia, 4120

Tel: (617) 3397 0277

Fax: (617) 3397 0030

e-Mail: sales@beechovens.com.au

Web: www.beechovens.com

ABN 14 115 371 741

PRODUCT



MANUFACTURER

BEECH OVENS

MODEL NUMBER

RND1500

PRODUCT DESCRIPTION

Round Stone Hearth Oven – Wood/Gas fired.

Ext Diameter:	Int Diameter:	Height:
Ø1850mm.	1500mm.	1730mm.

MANUFACTURED IN AUSTRALIA

www.beechovens.com

SPECIFICATIONS

Purpose	Wood/Gas Fired stone hearth oven for cooking Pizza and other dishes.
Construction	High grade castable ceramic encased in 5mm steel housing supplied in 2 major sections with removable legs. 50mm insulation covers oven body, 25mm air gap between insulation and non-combustible façade material. 75mm stone hearth floor above 25mm insulating board and 5mm plate.
Firing Type	Wood, Gas or Gas Back-up (<i>Wood and Gas</i>)
Gas	Gas Back-up - 80Mj NAT / 80Mj LPG (<i>Tube Burner</i>) Full Gas – 70Mj + 80Mj Nat / 70Mj + 80Mj LPG (<i>Display + Tube Burner</i>)
Exhaust Requirements	Under Canopy/Hood OR Beech Spray Filter (<i>Wet Scrubber</i>) OR Flue Transition.
MEP Ratings	Gas Connection – 19mm (3/4") line (1 per burner). Electrical – 220-240VAC @ 50Hz 1 Phase 10 AMP Spray Filter Water Inlet– 15mm @ 30 L/Hr. Spray Filter Water Outlet – 40mm Copper Drain – To drain via tundish visible to operator. Spray Filter Water Solenoid – 220-240VAC @ 50Hz 1 Phase 10AMP (<i>Linked to exhaust fan – Fan ON = Solenoid ON</i>) Spray Filter Exhaust Ratings – 300mm x 300mm connection, 130Pa Static Pressure, 700l/sec Spray Filter Cool air Make-up unit – Ensure a fresh air supply is available. No connection required.
Capacity	Cooks approximately 90 x 300mm pizzas per hour.
Accessories	Pizza Tools (<i>Pizza Peel, Spigot Brush, Brass Floor Brush, Bubble Hook, SS Rake and Shovel</i>) Stainless Steel Hearth (<i>Optional – shown in image</i>) Spray Filter (<i>Optional – shown in image</i>)
Safety	Oven and associated systems are CE and UL compliant. UL Tested to Subject 2162 (<i>Wood/Gas Fired</i>). Complies to USA "ANSI-NSF standard 4" Exterior temperatures below 50°C. Compliant Gas systems with flame failure device.
Special Requirements	Façade and Oven surround to be made of non-combustible material. Tube Burner Vent to be connected via ventilation panel in front façade panel below oven door (<i>See Installation and Operation Manual for details</i>) Access and ventilation panel to both above and below oven - minimum 600mm x 600mm Metal infill required between oven spigot and façade to prevent hot air and flames entering the façade cavity.

NOTES:
CONNECTION TO APPROVED FLUE/DUCTING REQUIRED
(CHECK LOCAL CODES AND REGULATIONS)

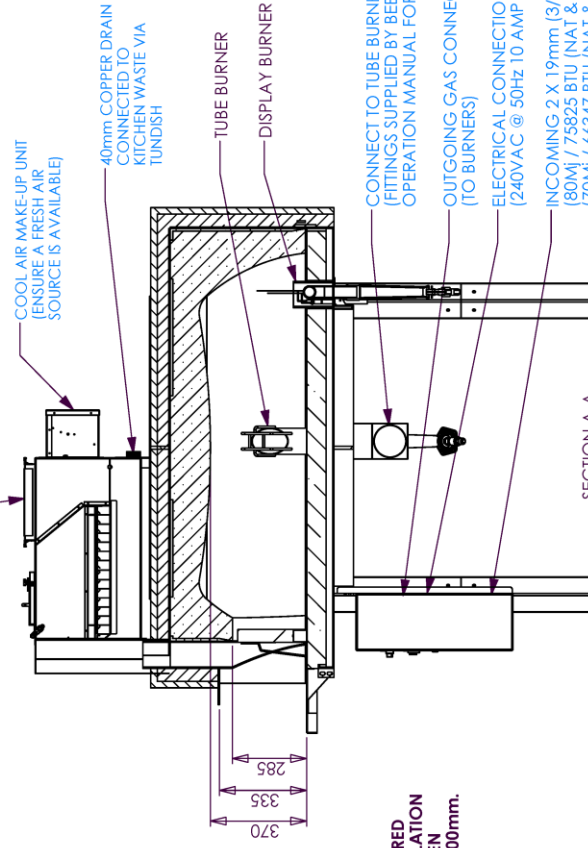
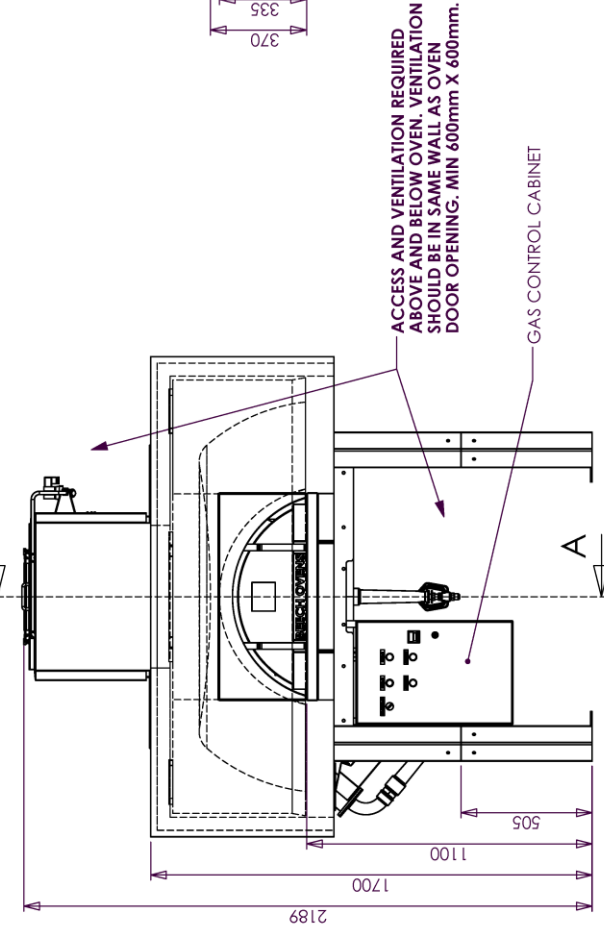
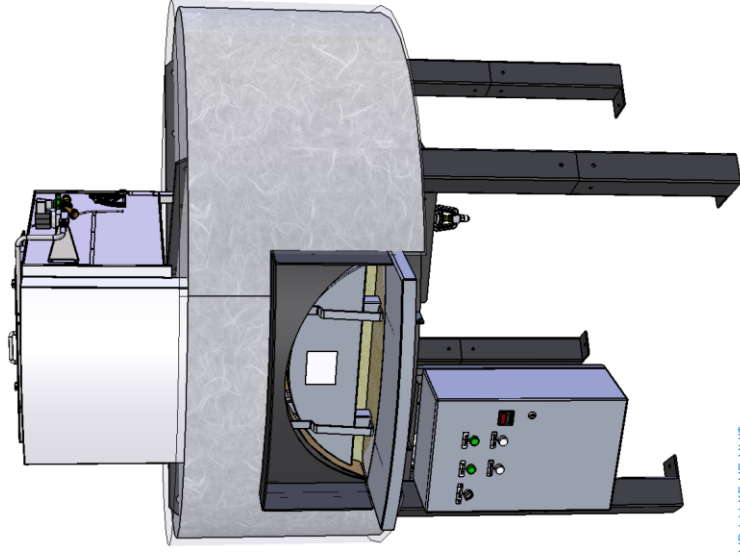
THE OVEN IS DELIVERED IN THREE (3) SECTIONS:

UPPER SECTION - Approx 1310kg
BASE SECTION - Approx 620kg
LEGS - Approx 8kg EACH

TOTAL WEIGHT = Approx 1980KG

SERVICES REQUIRED - SEE BLUE TEXT

FOR INSTALLATION INSTRUCTIONS SEE INSTALLATION AND OPERATION MANUAL



7								 BEECH OVENS Australia (617) 3397 0277		Drawn S Trood Checked Scale 1:20 Date 23/05/2011	ROUND OVEN Ø1500mm INTERNAL FGL (FULL GAS - TUBE LEFT) SS HEARTH_SPRAY FILTER A3 NTS - SITE MEASURE
										RND1500-2023 - DETAILS	
										ISSUED FOR CONSTRUCTION REV. 0 DESCRIPTION OF CHANGES	
										CHANGED BY DATE	
										©Copyright 2006 Beech Ovens Pty Ltd. All rights reserved.	
										LAST EDITED: Monday, 23 May 2011 10:42:56 AM	